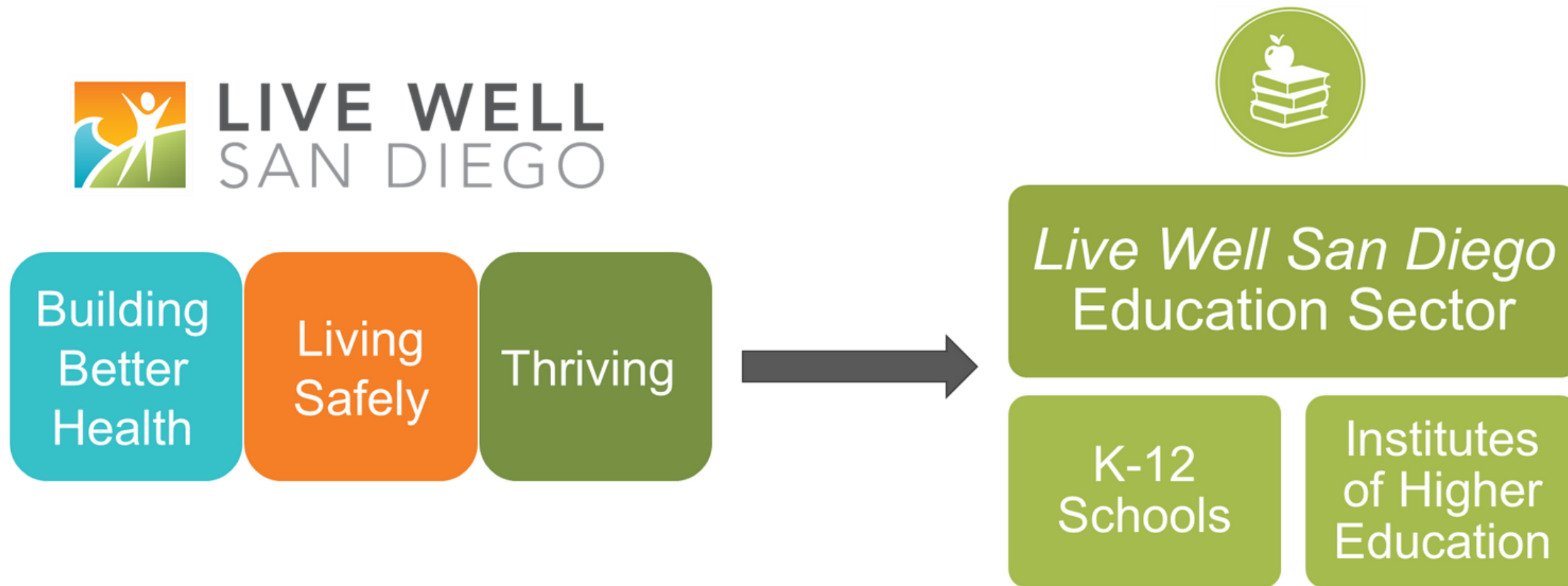


Live Well Schools

Local Control and Accountability Plan (LCAP)



Live Well Schools





PARTNERSHIPS FOR HEALTHY SCHOOLS



TO COMBAT CHRONIC ABSENTEEISM...

MORE THAN 140,000
SAN DIEGO COUNTY STUDENTS MISSED 10% OR MORE OF SCHOOL DAYS IN SY 2021-2022

Since School Year (SY) 2020-2021, the number of chronically absent students in San Diego County has increased from **15.7%** to **28.3%**, a difference of **over 61,000 students.**



...DISTRICTS NEED STRONG WELLNESS POLICIES...

Wellness policies with unique goals and robust actions showed improvements in WellSAT* scores by:



Comprehensiveness



Language Strength

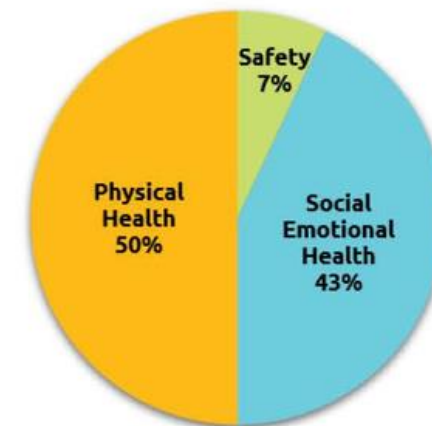
22
DISTRICTS HAVE UPDATED THEIR WELLNESS POLICIES SINCE 2017

*The WellSAT 3.0 is a national quantitative assessment tool developed by the UConn Rudd Center for Food Policy & Health to reflect best practices and identify where local school wellness policies are strong and where they could be improved.

...SUPPORTED BY FUNDING.

ITEMIZATION OF FUNDING FOR HEALTH & WELLNESS ACTIONS NEARLY **TRIPLED** BETWEEN SY 2019-20 AND SY 2021-22

In 2021-2022, San Diego County school districts collectively spent **\$855 million** on Health and Wellness actions, which was **39%** of the districts' State funding. The actions include Safety, Physical Health, and Social Emotional Health. Itemization of funding increased from **15%** to **45%** between School Years 2019-2020 and 2021-22, with the largest itemization increases in Physical Health and Social Emotional Health.



To learn more about your district's trends in these key areas, contact [Pam Smith](#) of Live Well Schools.



Revised December 2022



LIVE WELL SAN DIEGO

Chronic Absenteeism

What is Chronic Absenteeism?

Defined as a student missing 10% or more of enrolled school days, whether excused or not (typically, ~18 days) in California

Why is Chronic Absenteeism a problem?

When schools have a lot of absent students, a breakdown of positive learning conditions occurs.

What does Live Well Schools do?

Live Well Schools gathers and analyzes data which helps schools adjust their wellness policies to combat chronic absenteeism.

Absenteeism Rates for ALL Students in School Year	San Diego County		California Average
	# Chronically Absent Students	% Chronically Absent	
2020-21	68,410	16.5%	14.3%
2021-22	124,756	30.4%	30.8%

Absenteeism Rates by Student Subgroup	% Chronically Absent in SY 2021-22	
	San Diego County	California
Male	30.6%	31.1%
Female	30.1%	30.6%
Foster Youth ★	48.40%	46.40%
English Learners ★	40.7%	35.0%
Students with Disabilities	41.5%	41.9%
Homeless	52.9%	46.7%
Socioeconomically Disadvantaged ★	40.4%	38.1%
Migrant	40.5%	33.2%

Above data is specific to non-Charter schools

★ = student group which must have rates reported on in LCAP



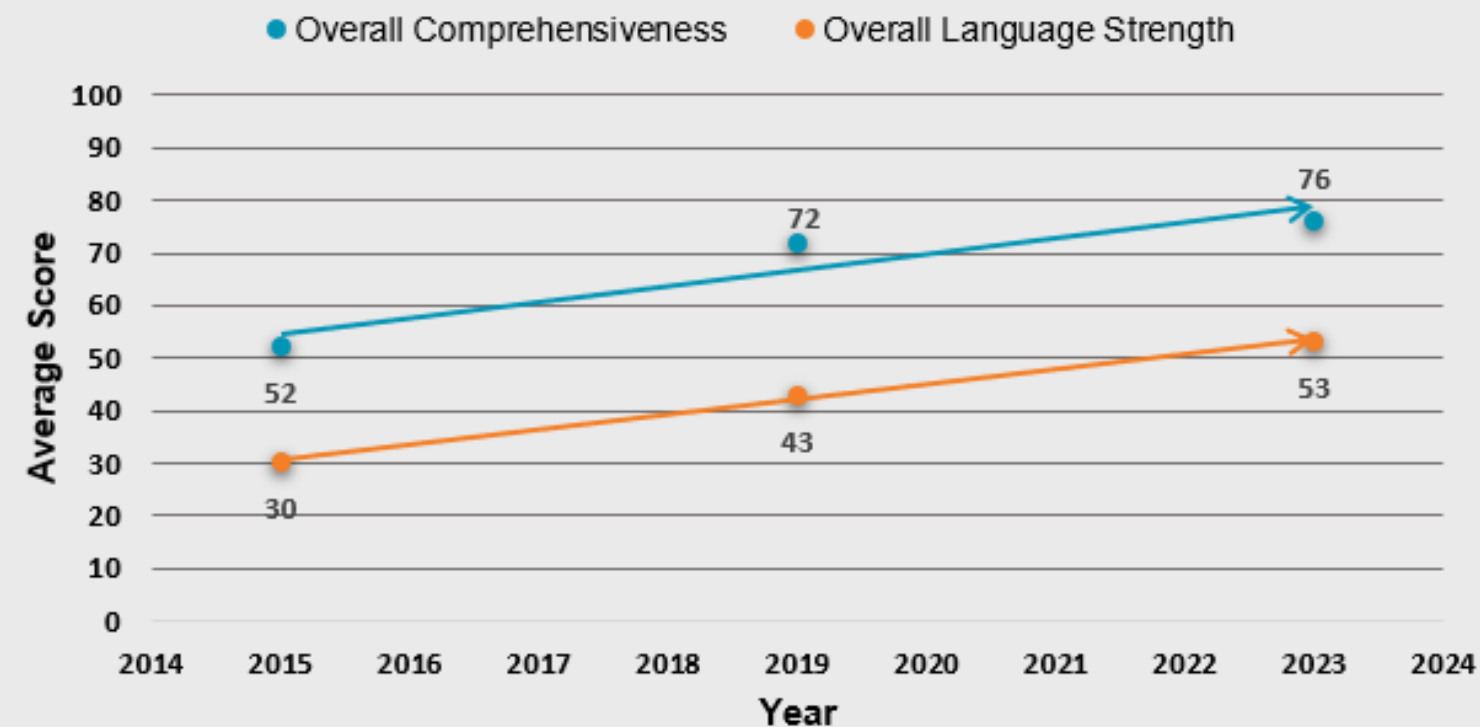
Wellness Policy

Current WellSAT 3.0

San Diego County School District WellSAT Averages

Scoring Year	2015	2019	2023
Overall Comprehensiveness (max. 100 points)	52	72	76
Overall Language Strength (max. 100 points)	30	43	53

San Diego County WellSAT Averages



What is a Wellness Policy?

A written document that guides school districts' efforts in creating healthy and safe environments.

Who must have a policy?

A school district participating in any Federal Child Nutrition Program is required to develop and implement a wellness policy.

How does Live Well School help?

Our team created a model policy, does continual analysis of school wellness policies as they are updated, and works hand on with school districts to update policies. These policies can help inform a district's budget and spending which are also known as Local Control Accountability Plans (LCAP).



LIVE WELL
SAN DIEGO

Focus Areas

1

Chronic Absenteeism

2

Wellness Policy

3

Budget (LCAP)



Itemized v. Nonitemized



Categories



Overview of School Year 2021-2022



**LIVE WELL
SAN DIEGO**

Local Control and Accountability Plan (LCAP)

What is a LCAP?

An LCAP is a school district budget that describe the goals, actions, services, and spending a district plans to take to support positive student outcomes that address state and local priorities.



Who are they for?

Every student, but with a focus on students with the greatest need (i.e., English Language Learners, children from low-income families, and foster youth).



Why do they matter?

LCAPs are important to achieve both health and educational equity for all student groups in each school district.



Live Well Schools....

Analyzes LCAPs to identify spending dedicated to health and wellness to help inform future spending decisions.



Overall, LCAP funding decisions should help meet the goals of the **Wellness Policy**.

To learn more please visit:

Local Control and Accountability Plans |

Live Well San Diego (livewellsd.org)

Student, families, and community members can get more information here.



School and District Staff can get more information here



LIVE WELL
SAN DIEGO

What is an LCAP?

What is an LCAP?

An LCAP also known as a Local Control Accountability Plan is a school district budget that describes the goals, actions, services, and spending a district plans to take to support positive student outcomes that address state and local priorities.



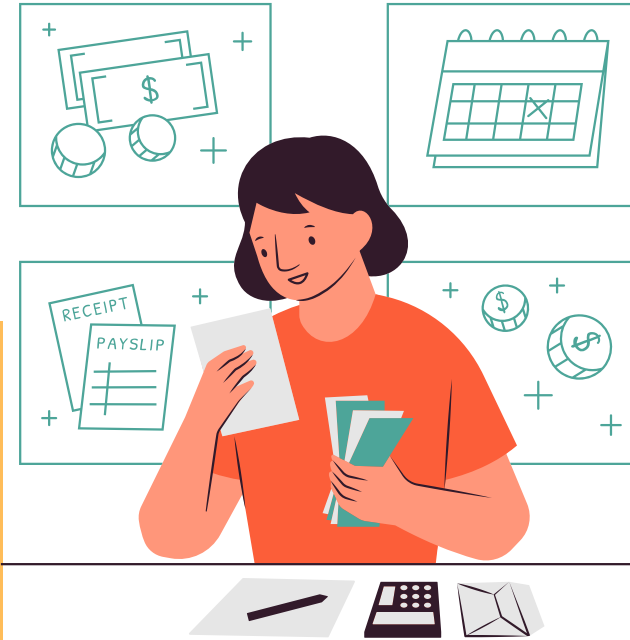
Why are LCAP's important?

- Justifies a districts budget for the next three years.
- Help achieve equity for all students and groups.

Who is the targeted audience?

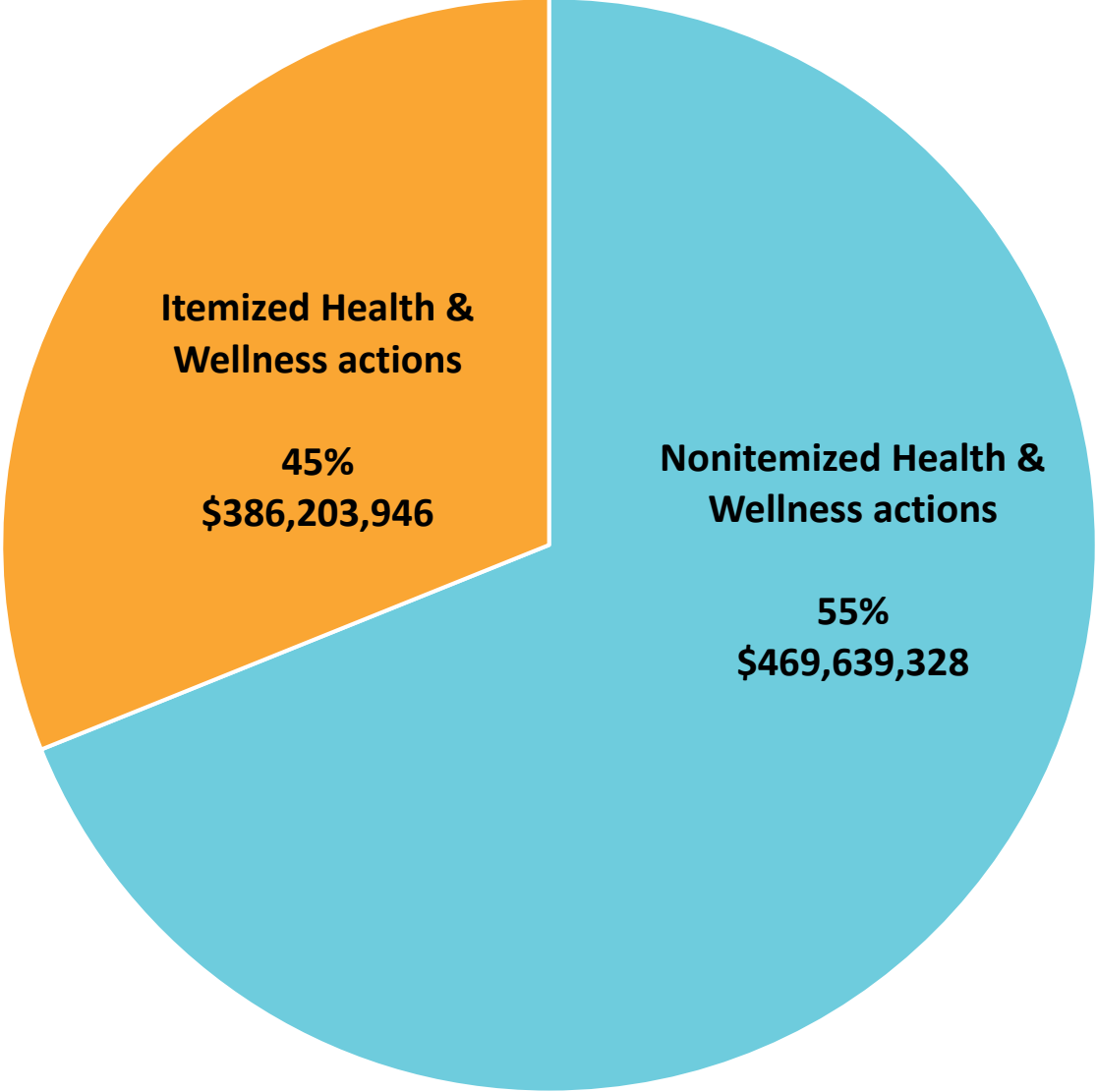
They are for every student but with a focus on students with the greatest need.

- English Language Learners
- Children from low-income families
- Foster Youth



A look at SY 2021-2022 LCAP

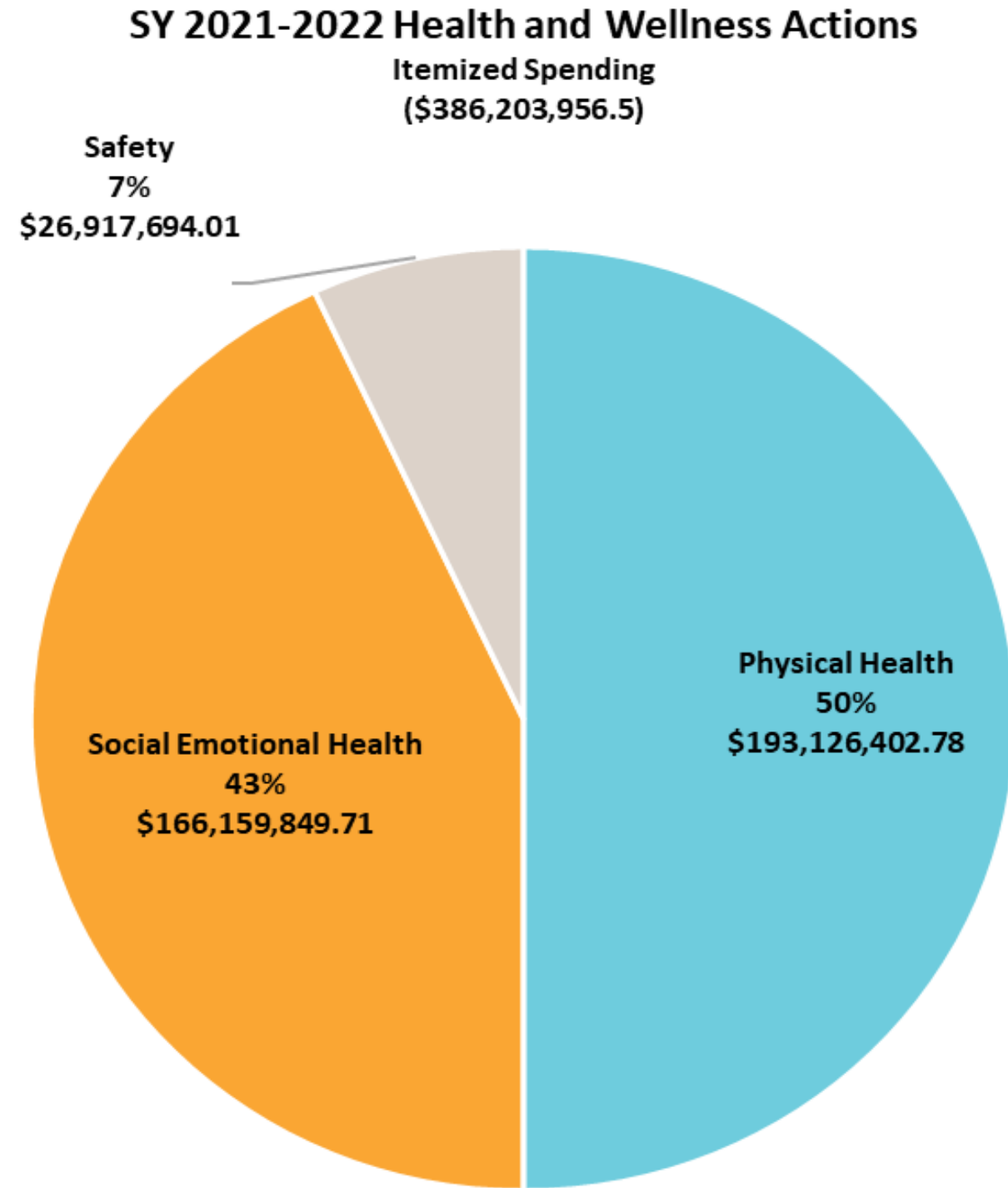
SY 2021-2022 total Health and Wellness (H&W) Spending
Total itemized and nonitemized H&W spending \$855,843,274



This figure compares itemized and nonitemized H&W spending for all 42 district LCAP's.



H&W Actions Itemized



This figure shows the percent of itemized H&W spending that was devoted to each H&W category for all 42 district LCAPs.



How LCAPs are Analyzed

Physical Health

- Combined Physical Health Actions
- Health Education
- Nutrition
- Physical Activity
- Physical Education
- Professional Development
- Environment

Social Emotional Health

- Combined Social Emotional Health Actions
- Connectedness
- Materials and Curriculum
- Personnel
- Professional Development

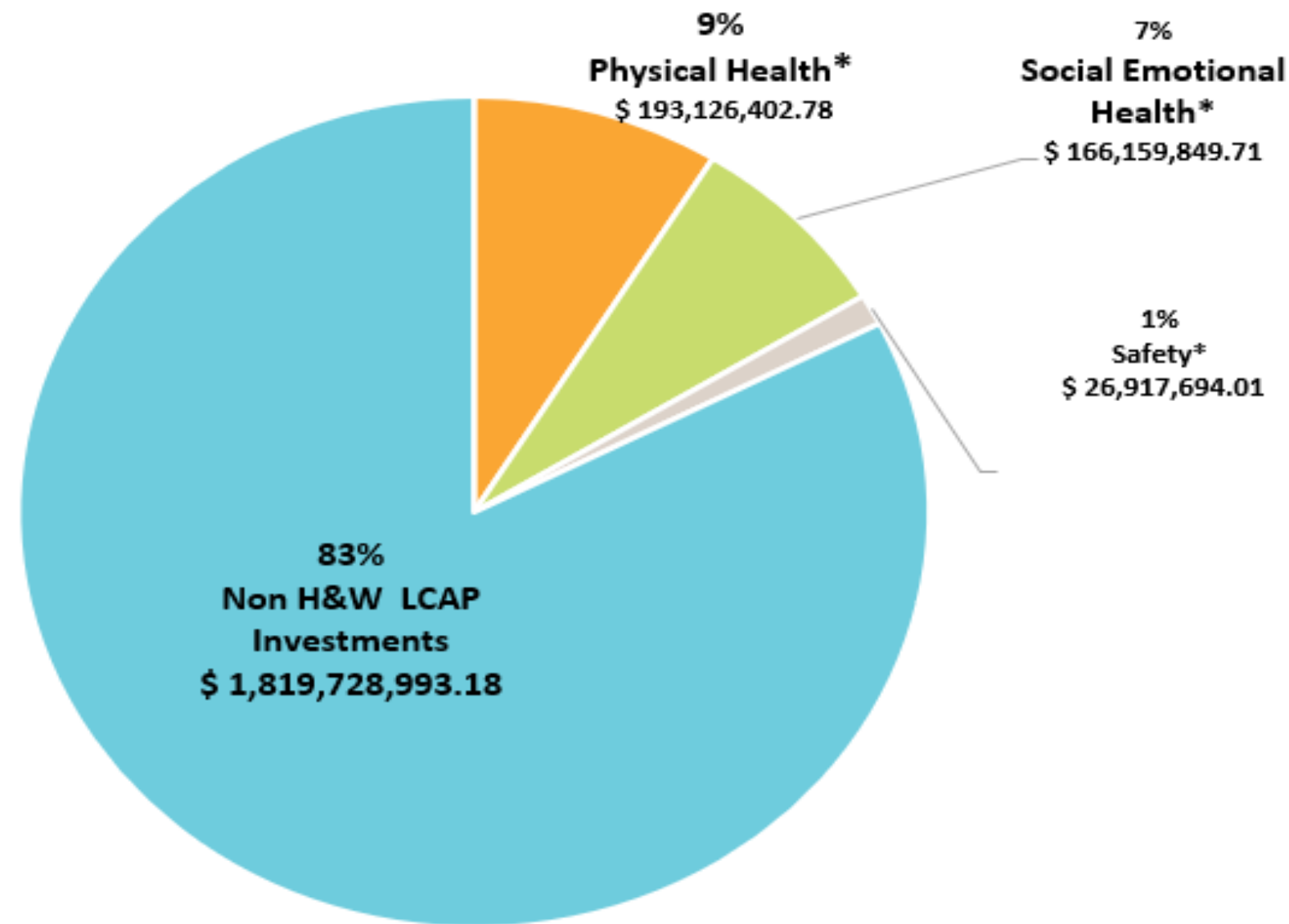
Safety

- Combined Safety Actions
- Personnel
- Physical Safety Measures
- Training/Workshop



H&W Spending Analysis for SY 2021-2022

SY 2021-2022 Percent of Itemized Health & Wellness Spending out of Total LCAP
Spending
Total Spending \$2.2B



This figure shows that 17% (\$386 million) of the total LCAP spending (\$2.2 billion) was spent on itemized H&W actions.



Additional Information



Visit our online
Tools for Schools Toolkit
today!



Scan me!

The **Tools for Schools** resource database was created by Live Well Schools to provide **information** and **resources** to meet the immediate needs of students, staff, and families.

This online, **searchable resource database** makes it easy to find resources on a wide variety of topics in **English** and **Spanish**.

We are continually adding new resources. If you have any suggestions, please visit livewellsd.org/toolsforschools for how to make a submission.

Live Well Schools Focus Areas



HEALTH
EQUITY



SOCIAL &
EMOTIONAL
WELLNESS



HEALTH &
WELLNESS



CHRONIC
ABSENTEEISM



We have a new website!

Visit us at
[Live Well Schools | Live
Well San Diego](http://LiveWellSchools|LiveWellSanDiego)
[\(livewellsd.org\)](http://livewellsd.org)



LIVE WELL
SAN DIEGO

THANK YOU!

Victoria Puckett, GSW

Sanela Sanborn, GSW

Deirdre Kleske, Healthy Works Program Specialist

Deirdre.Kleske@SDCounty.CA.Gov

