



Steps to Advocate for Wellness in Local Control Accountability Plans (LCAPs) for Academic Success

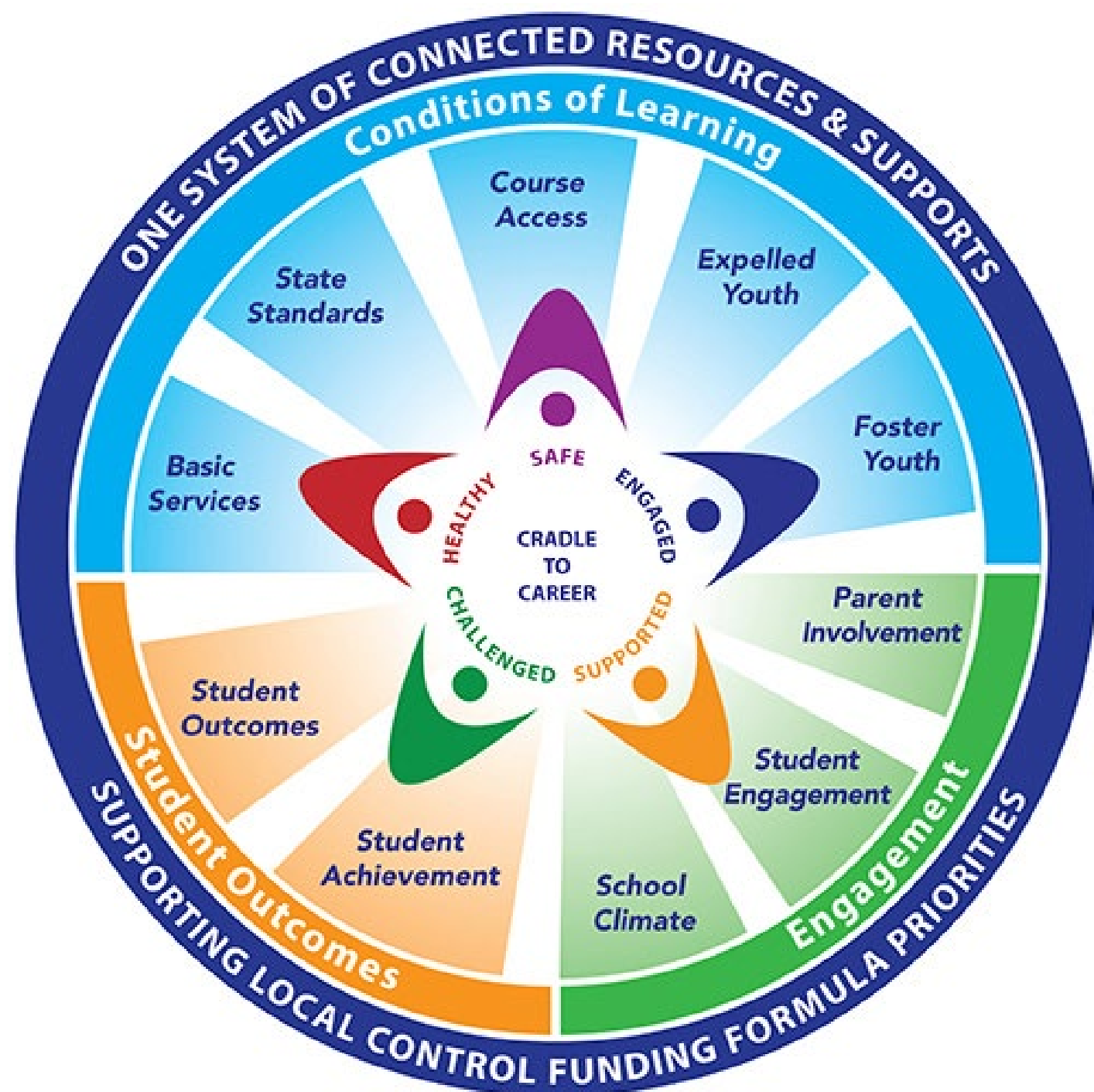
**Santa Barbara School Wellness Summit
October 2023**



CALIFORNIA DEPARTMENT OF EDUCATION
Tony Thurmond, State Superintendent of Public Instruction

Question

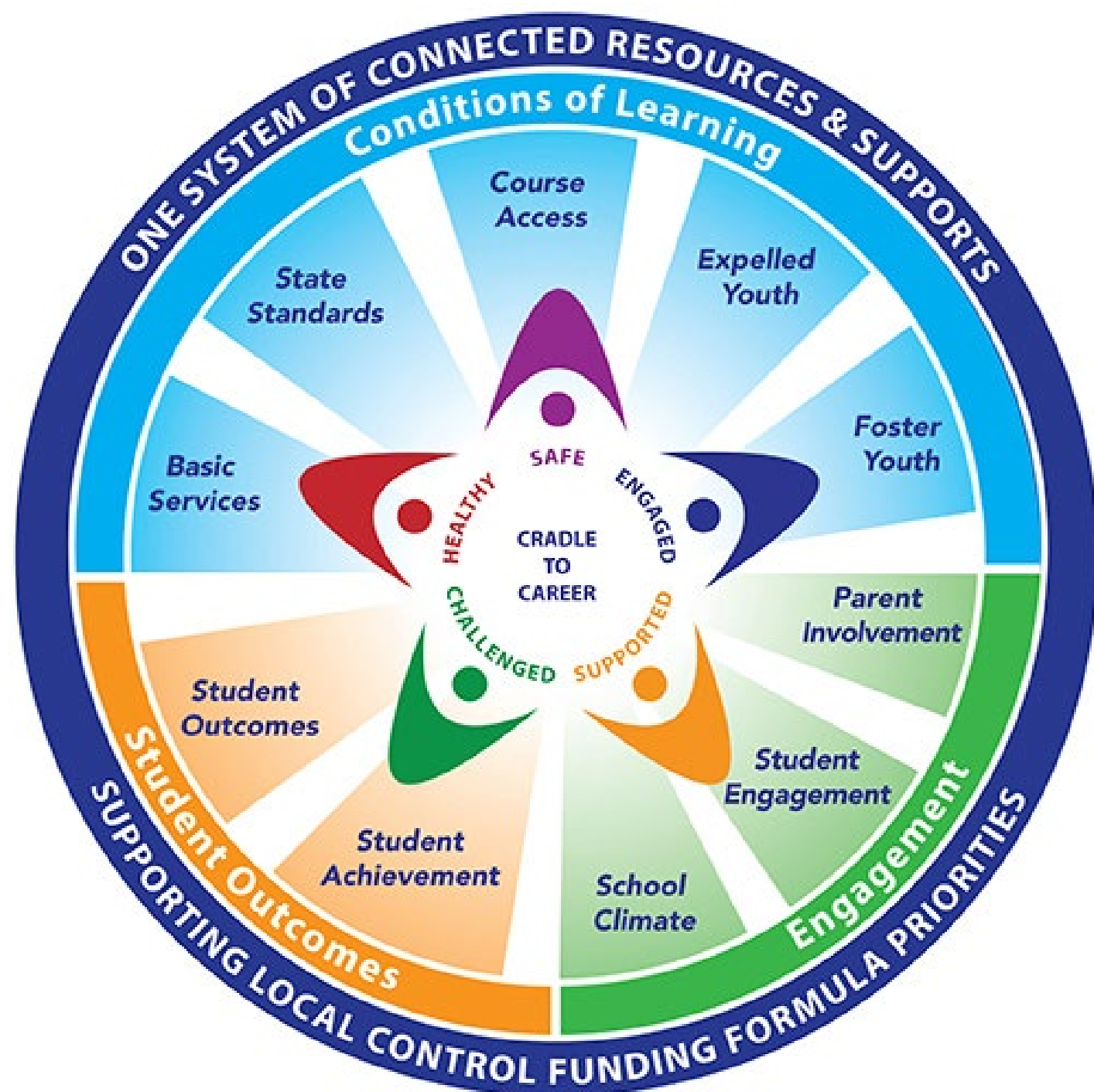
Where does Local School Wellness Policy (LSWP) implementation fit in the Local Control Funding (LCFF) Priorities?



Answer

Anywhere you want.

It is at the LEA's discretion to show or describe the correlation between their efforts and outcomes.





TONY THURMOND
State Superintendent
of Public Instruction

LSWP and LCAP





TONY THURMOND
State Superintendent
of Public Instruction

Aligning LCFF Priorities with School Wellness Activities

School Garden Program	Breakfast After the Bell	Farm2School Events
<ul style="list-style-type: none">• State Adopted Standards• Course Access• Student (Achievement• Parent Involvement• Pupil Engagement• School Climate	<ul style="list-style-type: none">• Student Achievement• Pupil Engagement• School Climate	<ul style="list-style-type: none">• Parent Involvement• Pupil Engagement• School Climate





TONY THURMOND
State Superintendent
of Public Instruction

LSWP and LCFF Examples (1)

- Health and Physical Education
- Culinary Programs
- Garden Programs
- Cafeterias and Playgrounds
- Food Markets or Pantry Programs
- Access to Water
- Physical activity
- Counseling and Mental health services
- Wellness Committees
- Community events (FunRuns, and Wellness Fairs)





TONY THURMOND
State Superintendent
of Public Instruction

LSWP and LCFF Examples (2)

- Before and after school programs (snacks and supper meals)
- School based health centers
- Anti-bullying/violence prevention
- Substance and tobacco use prevention
- Universal Meals (breakfast after the bell, adequate meal times, mobile food service)
- School Wellness Coordinators





TONY THURMOND
State Superintendent
of Public Instruction

LSWP and LCFF Examples (3)



LCFF funding is
unrestricted.



Provides funding for
opportunities or needs to
serve students.



Support from the
educators, parents, staff,
and students can be
included in your metrics.





TONY THURMOND
State Superintendent
of Public Instruction

LSWP and LCAP Resources

- CDE LSWP Web page at <https://www.cde.ca.gov/ls/nu/he/wellness.asp>
- CA LSWP Collaborative Web page at <https://healthyeating.org/caschoolwellness>
 - Steps to Advocate for Wellness in LCAPs (PDF)
 - School Nutrition for Academic Success: A LCAP Guide (PDF)
- CDE LCAP Development Resources web page at <https://www.cde.ca.gov/re/lc/lcapdevresources.asp>





TONY THURMOND
State Superintendent
of Public Instruction

Contact Us

- If you have any additional questions, contact the CDE at lswp@cde.ca.gov
- For more information about LCAP and LCFF, contact the CDE at lcff@cde.ca.gov

